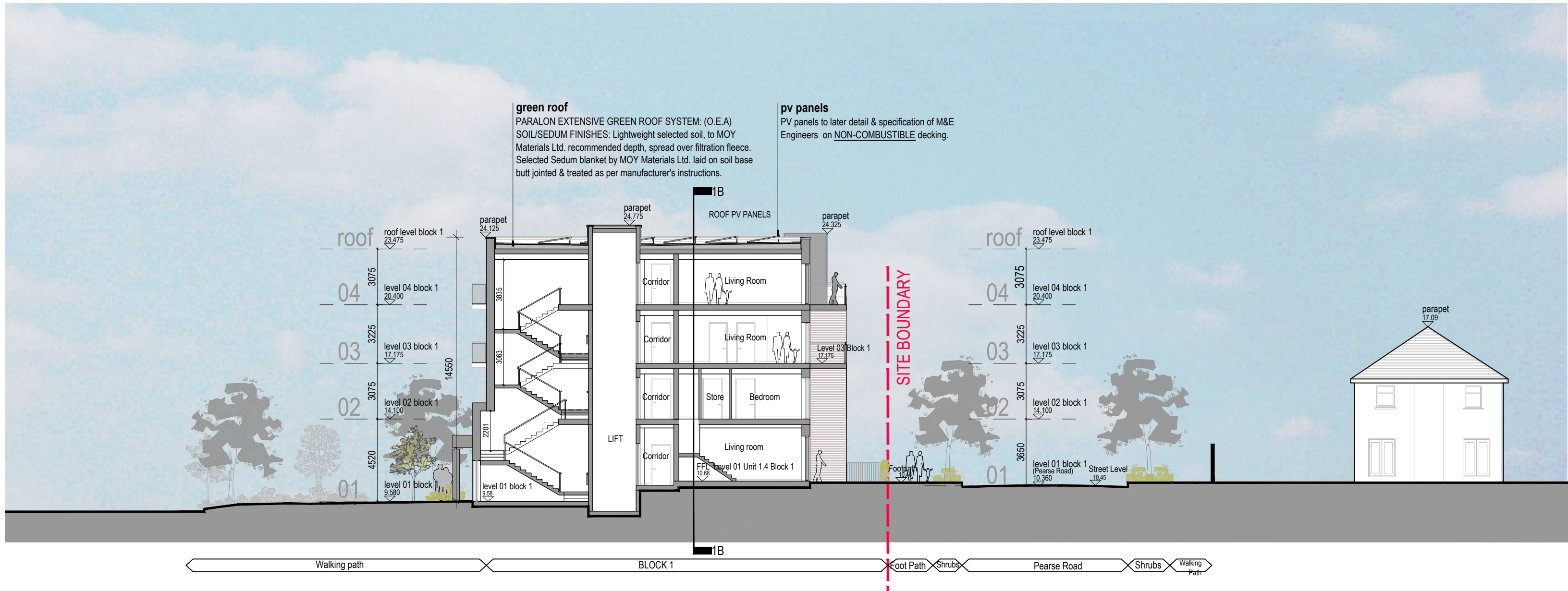
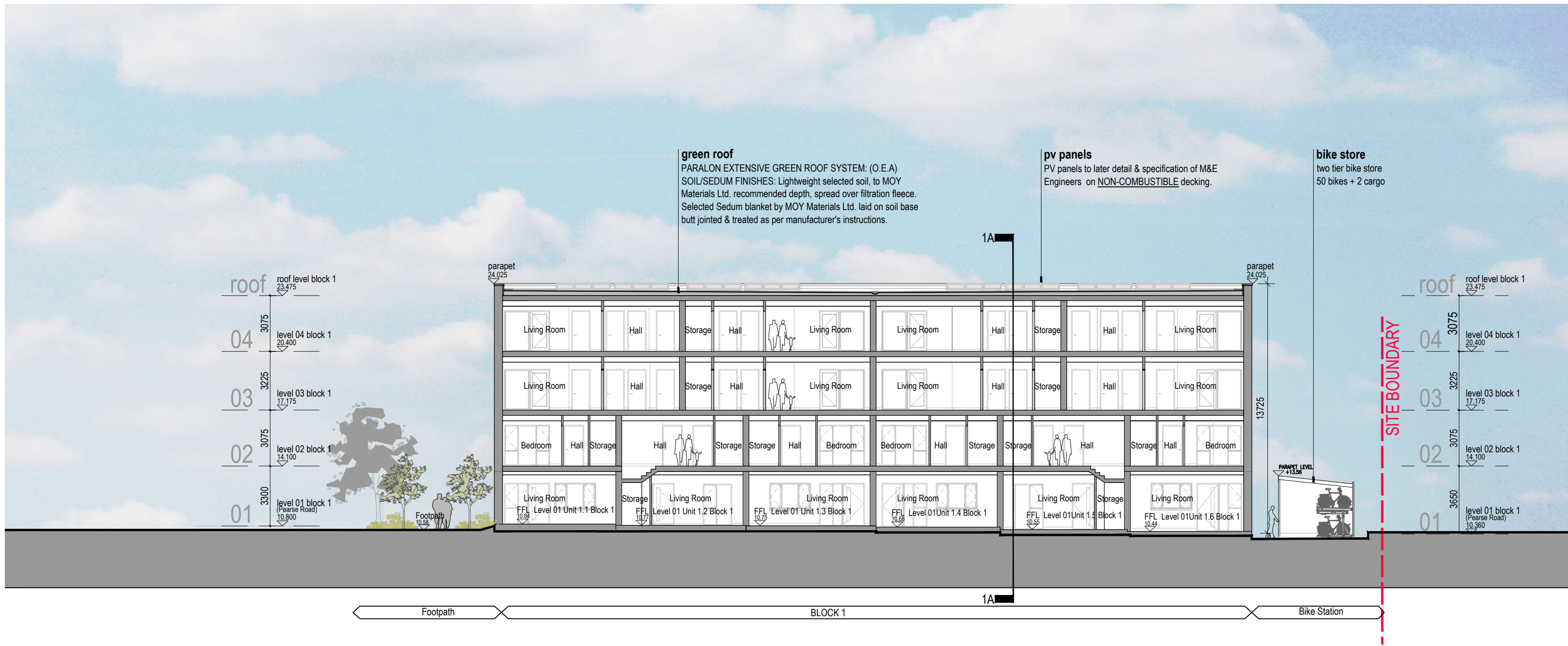


REFER TO ENGINEERS DRAWINGS FOR ALL  
PROPOSED ROAD AND FOOTPATH LAYOUTS AND  
DETAILS

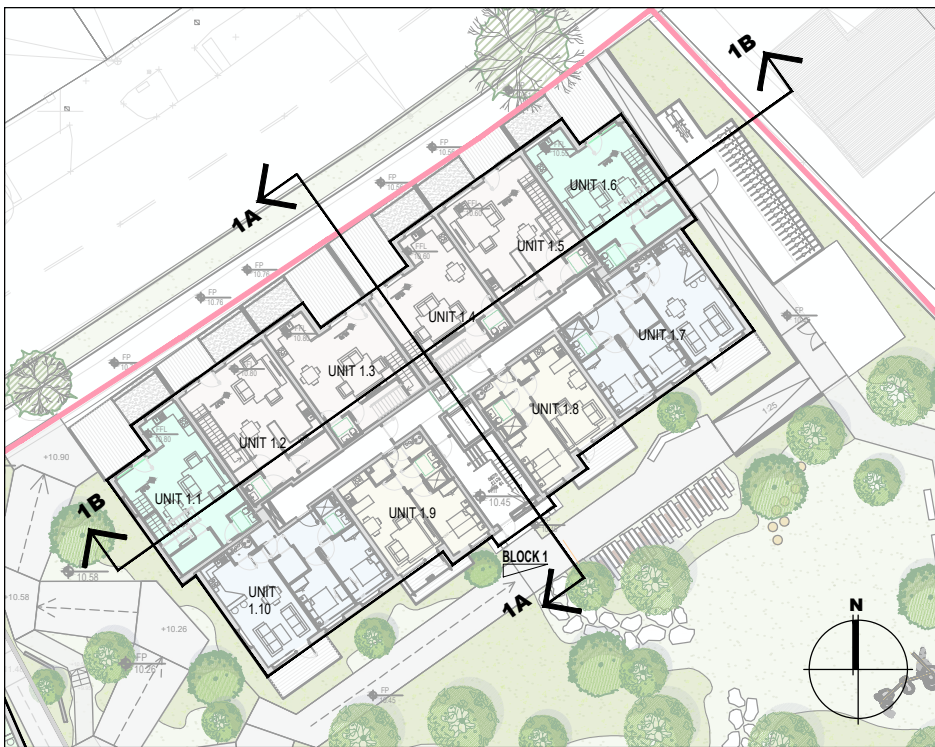
REFER TO LANDSCAPE ARCHITECTS DRAWING FOR  
ALL LANDSCAPING DETAILS



01 Block 1 Section 1-A  
1:200



02 Block 1 Section 1-B  
1:200



KEY PLAN 1:500

## Block 1 Sections

Notes		Issue Status								No.		Date		Revision		Initials	
1. Copyright Reserved		Progress								D		02.04.2025		General Update to Sections		AB	
2. Work to figured dimensions only. Do not scale drawing.		Planning Application		■													
3. The contractor is responsible for checking all levels and dimensions on site and shall refer all discrepancies to the Architect		Fire Cert															
4. Where appropriate, for details of r.c. structure, or mechanical and electrical details, see Engineers drawings		Disability Cert															
5. Proprietary items shall be fixed in strict accordance with manufacturers instructions.		Tender															
6. Sizes of proprietary items shall be checked with manufacturer.		Construction															
7. The contractor shall be responsible for the coordination of structure, finishes and services.		As Built															
		Information Only															
M:\Project Section - Current\6284 Kinsale Road\CAD\Planning\Planning 1\51 LRD Planning Application\2\ CAD Drawings\3\ Sections\BLOCK 01& 02 SECTIONS KRC-BKD-01-ZZ-DRA-3000.dwg 04/04/2025 10:23:26																	

Project		Kinsale Road LRD			
Drawing Title		Block 1 Sections			
Stage	Planning	Scale	1:200@A1	Drawn	AA MD
Project Code	6284	job	KRC	origin	BKD
		zone	01	level	ZZ
		type	DR	ds	A
		sheet no.	3000	status	P3.4
		rev	D	date	30.08.24

**bkd**architects

2ND FLOOR EUROPA HOUSE, HARCOURT CENTRE, HARCOURT ST. DUBLIN 02.  
002 WR00, IRELAND - EMAIL:ARCHITECTURE@BKD.IE - PH:01 618 2400 - W: WWW.BKD.IE