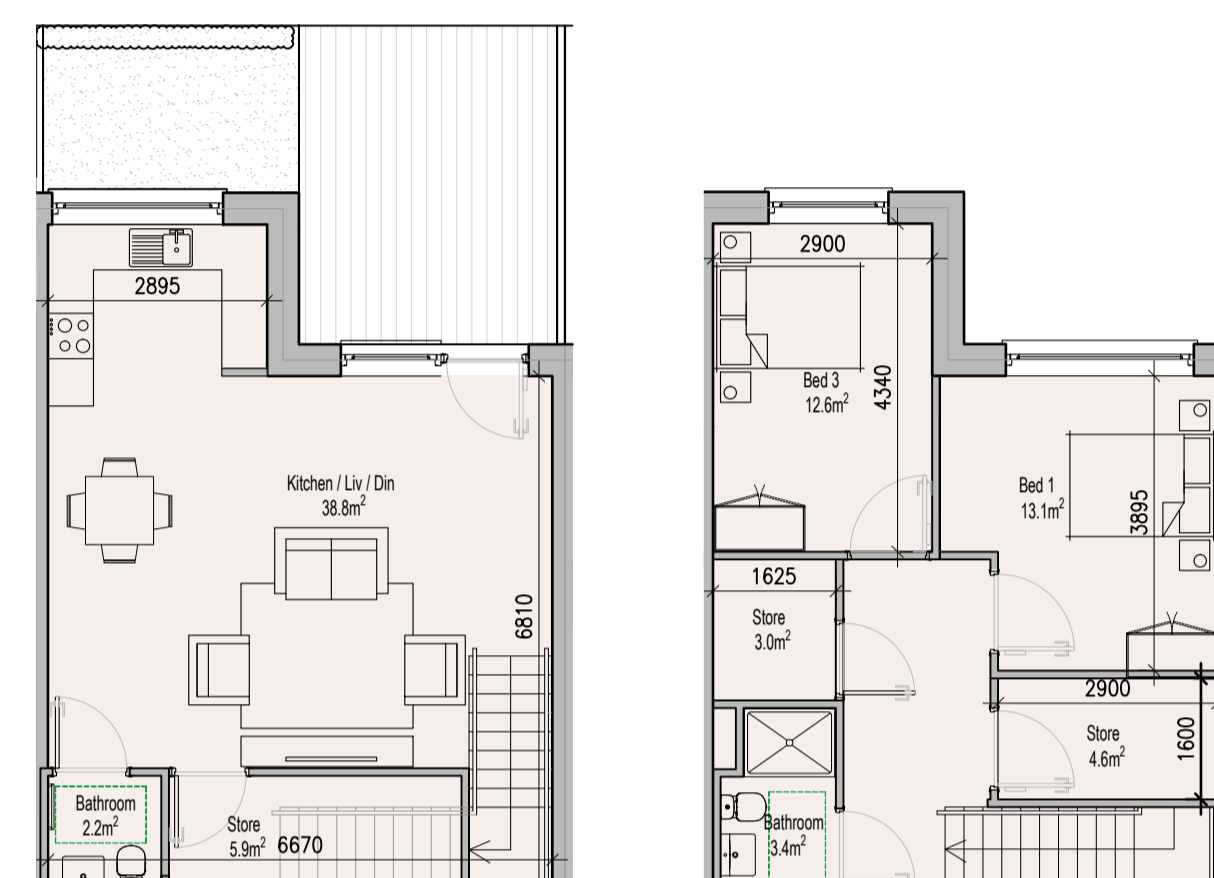
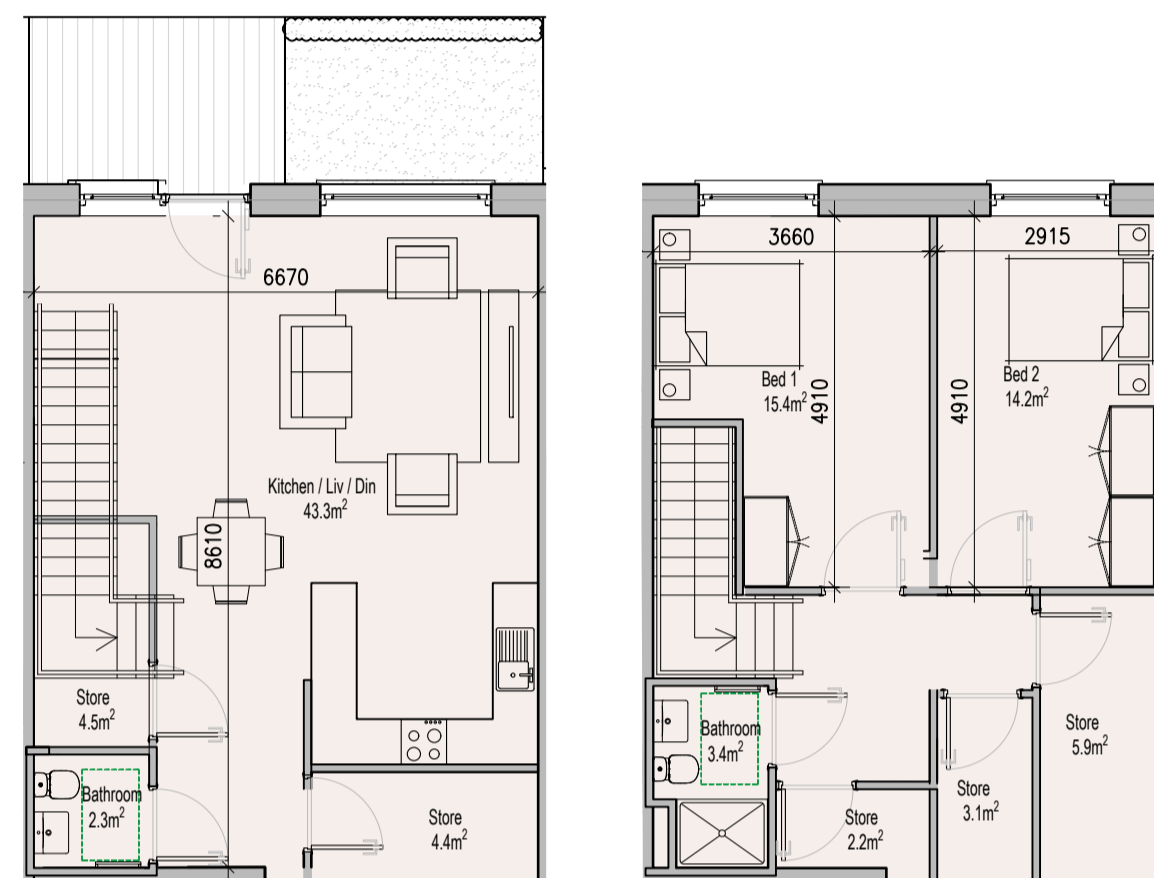
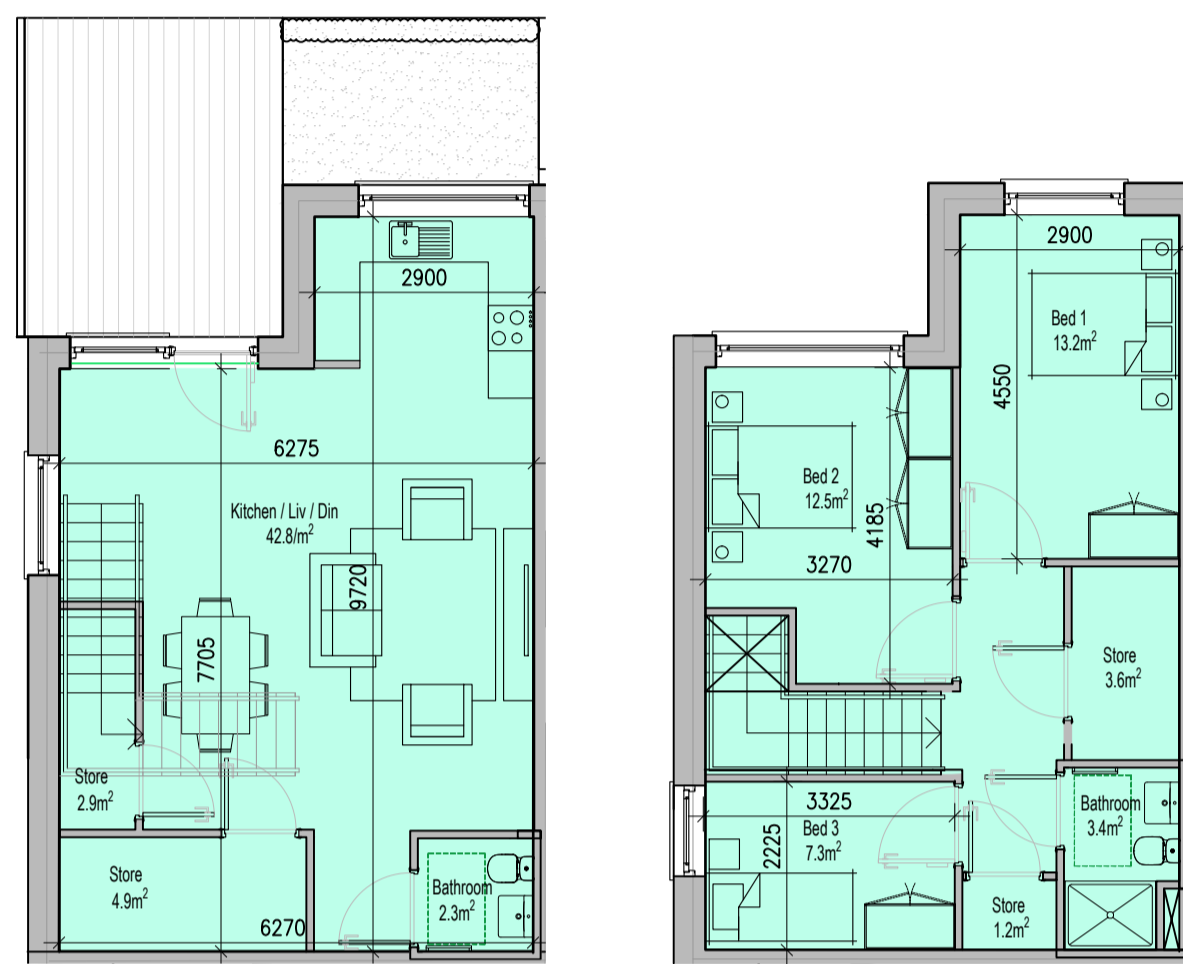


01 1 Bed Apartment - Type 01 (Gross Int. Area 49.5 sq m)
1/100

02 1 Bed Apartment - Type 02 (Gross Int. Area 59.2 sq m)
1/100

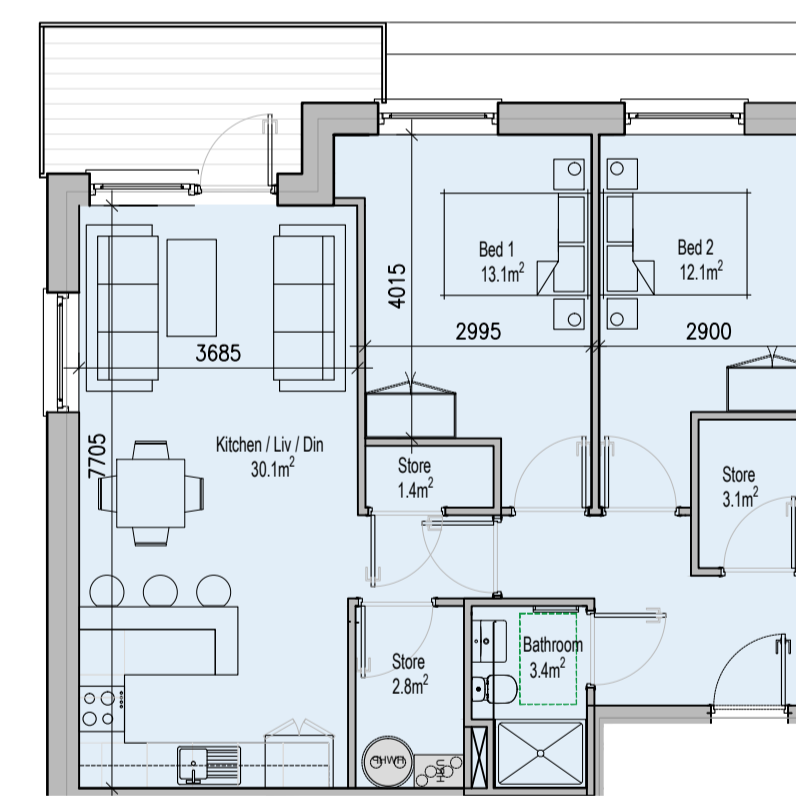
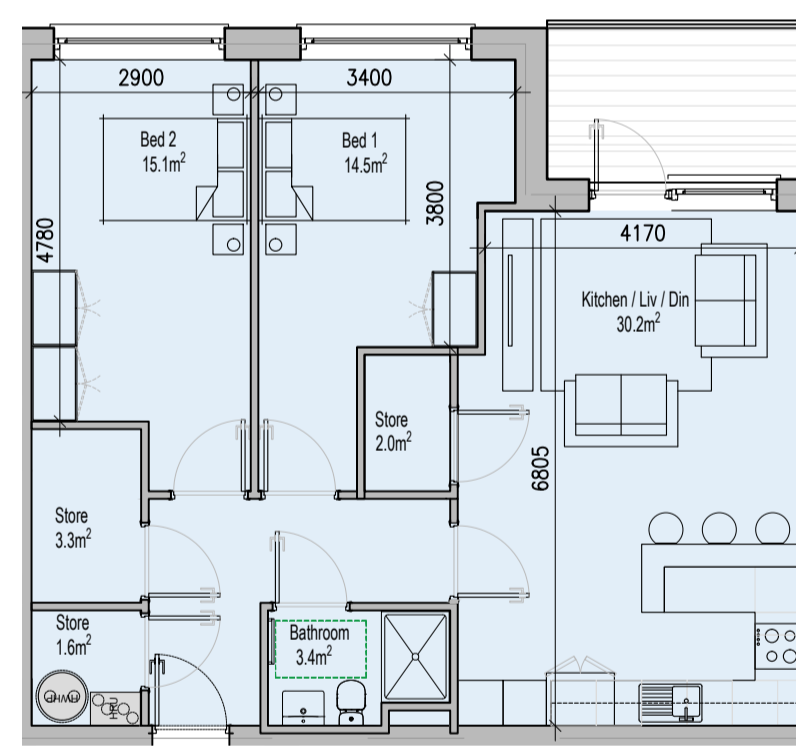
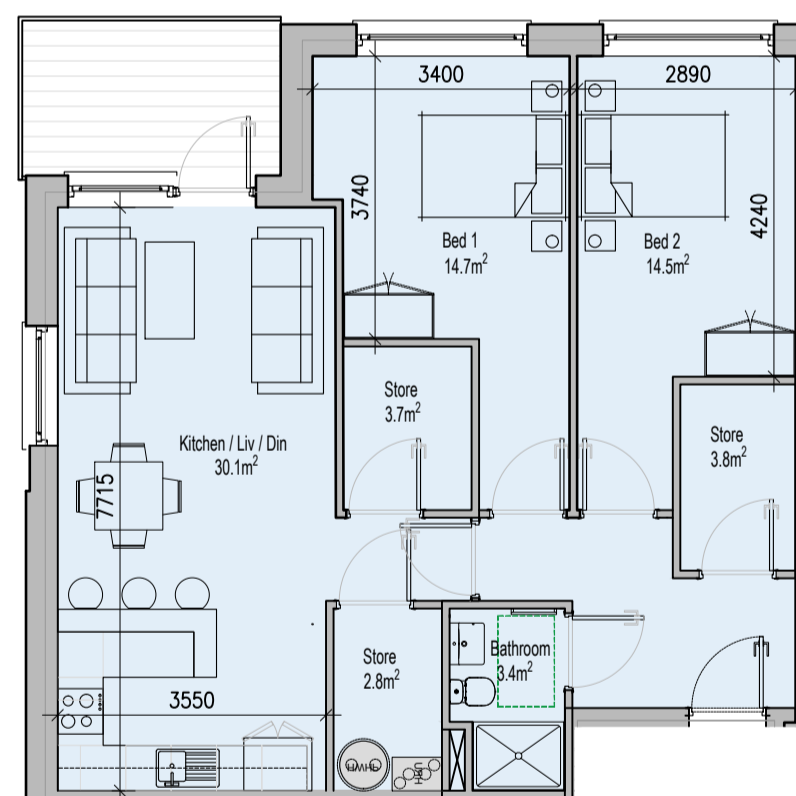
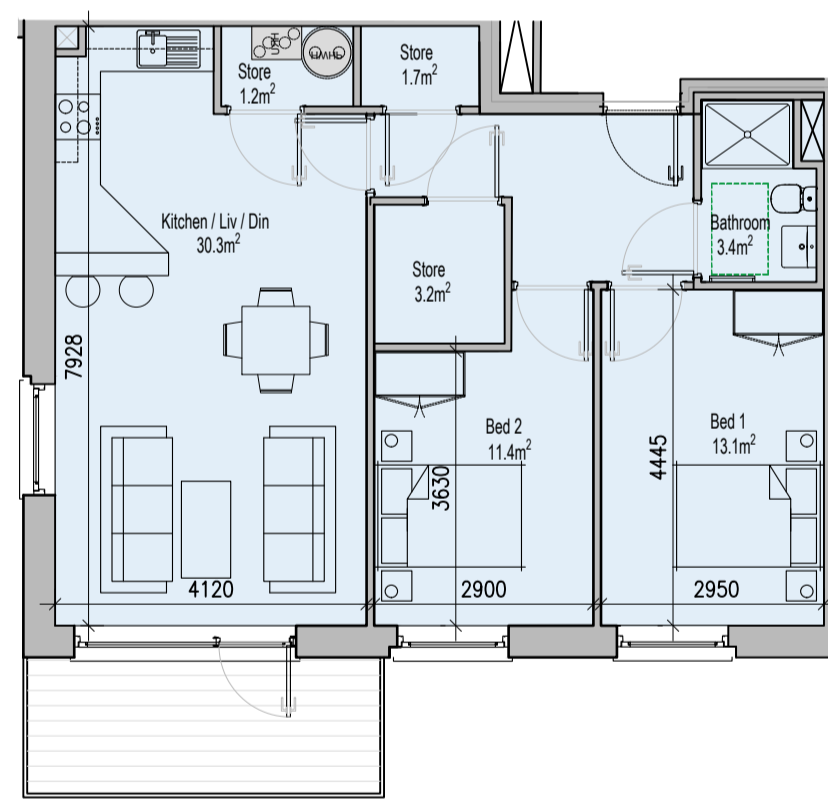
03 1 Bed Apartment - Type 03 (Gross Int. Area 53.6 sq m)
1/100



04 3 Bed Townhouse GF & FF - Type 01 (Gross Int. Area 108 sq m)
1/100

05 2 Bed Townhouse GF & FF - Type 01 (Gross Int. Area 116 sq m)
1/100

06 2 Bed Townhouse GF & FF - Type 02 (Gross Int. Area 102 sq m)
1/100

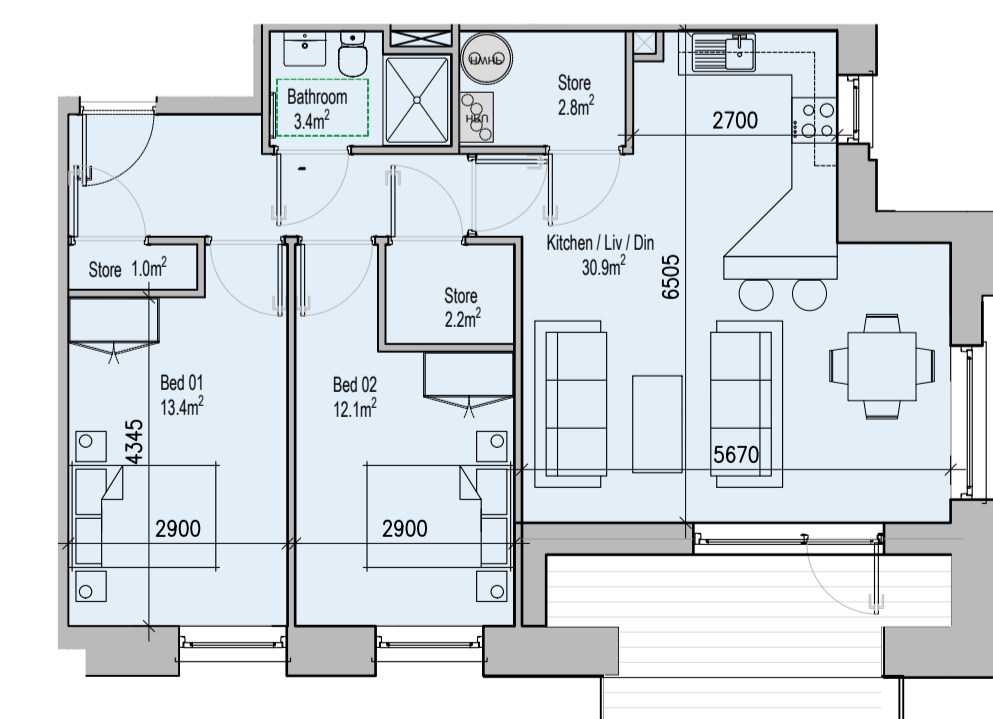
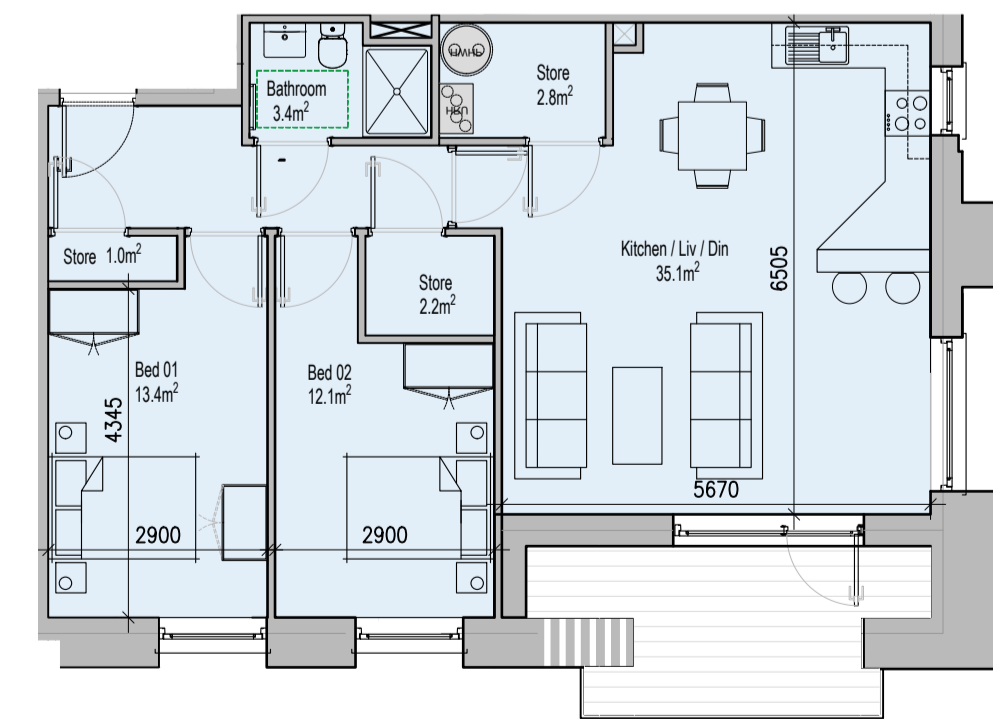
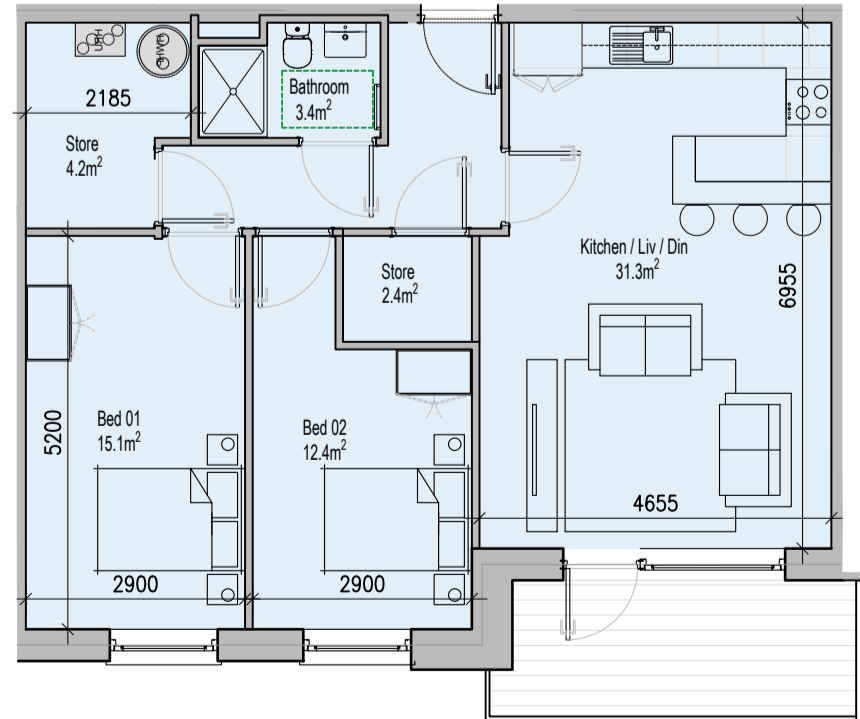
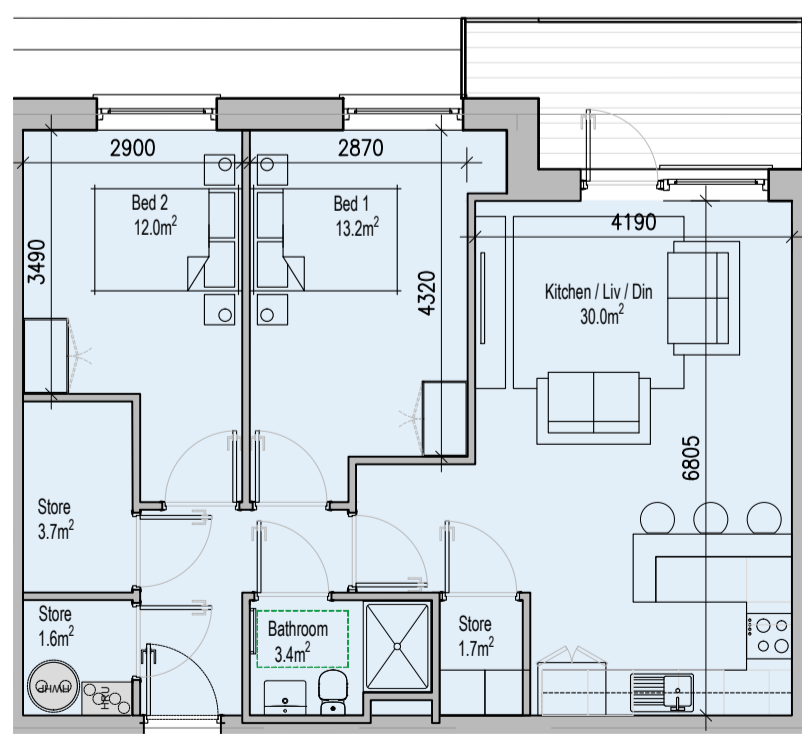


07 2 Bed Apartment - Type 01 (Gross Int. Area 75.6 sq m)
1/100

08 2 Bed Apartment - Type 02 (Gross Internal Area 84.8 sq m)
1/100

09 2 Bed Apartment - Type 03 (Gross Internal Area 82.0 sq m)
1/100

10 2 Bed Apartment - Type 04 (Gross Area 78.0 sq m)
1/100



11 2 Bed Apartment - Type 05 (Gross Internal Area 75.1 sq m)
1/100

12 2 Bed Apartment - Type 06 (Gross Internal Area 80.4 sq m)
1/100

13 2 Bed Apartment - Type 07 (Gross Internal Area 81.0 sq m)
1/100

14 2 Bed Apartment - Type 08 (Gross Internal Area 76.8 sq m)
1/100

Type	Unit	Block	Level
1 Bed Apartment- Type 01	1.8	01	01
	1.9	01	01
	2.8	02	01
	2.9	02	01
	3.1	03	01
	3.3	03	01
	3.6	03	01
	4.11	04	01
	1.12	01	02
	2.12	02	02
	2.13	02	02
	3.7	03	02
	3.11	03	02
	3.14	03	02
	4.22	04	02
	1.16	01	03
	1.17	01	03
	2.16	02	03
	2.17	02	03
	3.15	03	03
	3.22	03	03
	3.19	03	03
	4.33	04	03
	1.24	01	04
	1.25	01	04
	2.24	02	04
	2.25	02	04
	3.23	03	04
	3.27	03	04
	3.30	03	04
	3.31	03	05
	3.38	03	05
	3.35	03	05
	3.39	03	06
	3.43	03	06
	3.46	03	06
	3.47	03	07
	3.51	03	07
	3.54	03	07
	3.55	03	08
	3.59	03	08
	3.61	03	08
1 Bed Apartment- Type 02	4.10	04	01
	4.21	04	02
	4.32	04	03
1 Bed Apartment- Type 03	4.3	04	01
	4.14	04	02
	4.25	04	03
	4.36	04	04
	4.48	04	05
2 Bed Apartment- Type 04	1.30	01	04
	1.27	01	04
	2.30	02	04
	2.27	02	04
2 Bed Apartment- Type 05	1.28	01	04
	1.29	01	04
	2.29	02	04
	2.28	02	04
2 Bed Apartment- Type 06	3.2	03	01
	3.10	03	02
	3.18	03	03
	3.26	03	04
	3.34	03	05
	3.42	03	06
	3.50	03	07
	3.58	03	08
2 Bed Apartment- Type 07	3.8	03	02
	3.9	03	02
	3.16	03	03
	3.17	03	03
	3.24	03	04
	3.25	03	04
	3.32	03	05
	3.33	03	05
	3.40	03	06
	3.41	03	06
	3.48	03	07
	3.56	03	08
	3.57	03	08
2 Bed Apartment- Type 08	3.49	03	07

Type	Unit	Block	Level
3 Bed- Townhouse	1.1	01/02	01
	1.6	01/02	01
	2.1	01/02	02
	2.6	01/02	02
2 Bed- Townhouse Type 01	1.2	01/02	01
	1.5	01/02	01
	2.2	01/02	02
	2.5	01/02	02
2 Bed- Townhouse Type 02	1.3	01/02	01
	1.4	01/02	01
	2.3	01/02	02
	2.4	01/02	02

NOTE: Balcony sizes may vary, please refer to HQA for exact floor area per m2.
NOTE: Windows sizes and locations may vary, please refer to the GA drawings for reference

Notes	Issue Status	No.	Date	Revision	Initials
1. Copyright Reserved	Progress	D	02.04.2025	General Updates to Unit Types	DK
2. Work to figured dimensions only. Do not scale drawing.	Planning Application				
3. The contractor is responsible for checking all levels and dimensions on site and shall refer all discrepancies to the Architect	Fire Cert				
4. Where appropriate, for details of r.c. structure, or mechanical and electrical details, see Engineers drawings	Disability Cert				
5. Proprietary items shall be fixed in strict accordance with manufacturers instructions.	Tender				
6. Sizes of proprietary items shall be checked with manufacturer.	Construction				
7. The contractor shall be responsible for the coordination of structure, finishes and services.	As Built				
Types.dwg 04/04/2025 15:36:27	Information Only				

Project	Kinsale Road LRD				
Drawing Title	Typical Apartment Layouts				
Stage	Planning	Scale	1:100@A1	Drawn	MC
Project Code	6284	job	KRC - BKD	zone	ZZ - DR - A-
		level	ZZ	type	DR - A-
		sheet no.	1150	status	P3.4
		rev	D	Date	26.09.2024

2ND FLOOR EUROPA HOUSE, HARCOURT CENTRE, HARCOURT ST, DUBLIN 02, D02 WR02, IRELAND. EMAIL: ARCHITECTURE@BKD.IE. PH: 01 452 2400. WWW.BKD.IE